

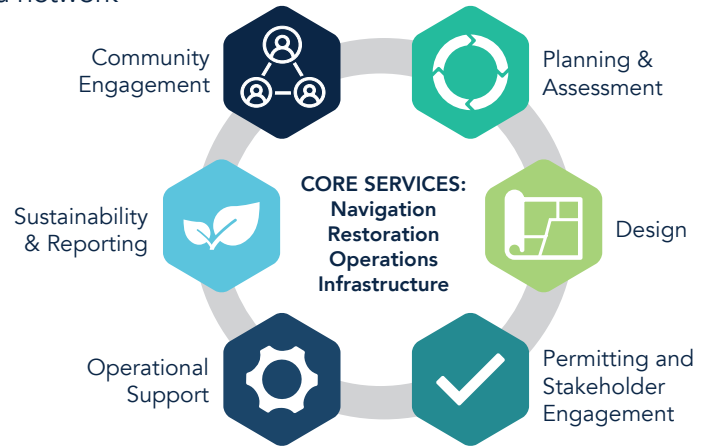
PORTS, HARBORS, AND MARINE TRANSPORTATION

EA is a 100% employee-owned public benefit corporation that provides environmental, compliance, natural resources, and infrastructure engineering and management solutions to a wide range of public and private sector clients. Headquartered in Hunt Valley, Maryland, EA employs more than 650 professionals through a network of more than 25 commercial offices across the continental United States, as well as Alaska, Hawaii, and Guam. In business for 5 decades, EA has earned an outstanding reputation for **technical expertise, responsive service, and judicious use of client resources.**



Aligning our services with the needs of ports nationwide, EA supports navigation, restoration (both of natural areas and contaminated sites), operations, and infrastructure. Capabilities match seamlessly with the phases of port development and operations, including resiliency and climate action.

INTERDISCIPLINARY SERVICES



PROJECT TYPES



Dredge Material Management

- Ecological & human health risk assessments
- Hydrodynamic/fate & transport modeling
- Long-range management plans
- Placement site evaluations & monitoring
- Sediment sampling & analyses
- Beneficial use & innovative technologies



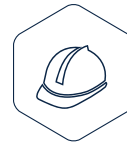
Contaminated Sediment

- Strategic sediment investigations
- Risk-based goals development
- Engineering design
- Habitat and ecosystem restoration
- Construction oversight
- Long-term monitoring



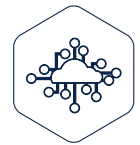
Operational Compliance

- Air, water, and waste management systems design & implementation e.g., ISO 14001
- Technology solutions for automated compliance
- ESG consulting
- Greenhouse gas reporting
- Sustainability program development
- Climate action planning
- Auditing
- Training



Program & Construction Management

- Program assessment
- Vulnerability assessment and resiliency
- Alternatives analysis
- Construction management and inspection
- Life-cycle analysis/value engineering
- Schedule & cost control
- Budgeting, financial management, and grants/funding
- Change order/claims
- Document control & management



Data Management & Technology

- Web and mobile application development
- Data management & warehousing
- Geographic information systems (GIS)
- Needs assessment & implementation planning
- Asset management
- System hosting & maintenance

CONTACT US



Richard Price, P.E., LEED AP, QISP, CSM, CISEC, Program Manager
p: 206-452-5346
e: rprice@eaest.com



Peggy Derrick
Vice President
p: 410-329-5126
e: pderrick@eaest.com

OFFICES NATIONWIDE
www.eaest.com



PORTS, HARBORS, AND MARINE TRANSPORTATION

NATIONAL PRESENCE. REGIONAL CONNECTIONS.

● PROJECT LOCATIONS ● OFFICE LOCATIONS



Port of Seattle

Supporting the Maritime Environment and Sustainability group, EA serves as prime contractor for successive multi-year contracts providing MS4 NPDES program management and operational media compliance services. Services include development and implementation of environmental management initiatives such as facility environmental auditing, waste minimization efforts, preparation of spill prevention plans, and development of compliance tracking programs.

EA also supported a diverse stakeholder group developing the Maritime Climate and Air Action Plan (MCAAP), a comprehensive plan to address climate change and air pollution from maritime sources. The plan identifies strategies and actions the Port will take to reduce maritime-related air and greenhouse gas emissions in the next 10 years towards a vision of zero emissions by mid-century. The Port of Seattle Commission adopted Resolution No. 3792 to adopt the MCAAP on 16 November 2021.



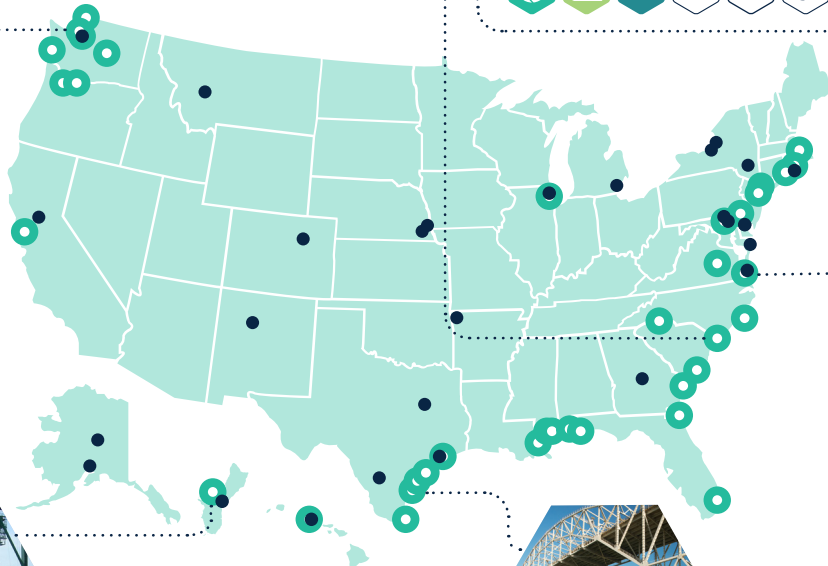
North Carolina Ports Authority

EA is supporting a leadership team assessing, designing, and implementing an ISO 14001-based Environmental Management System for operations at 3 locations.



Parallel Thimble Shoal Tunnel

EA managed the Joint Permit Application (Section 404, Section 10, and VA Water Protection Permit); support for Section 401 Water Quality Certification; and Virginia Pollutant Discharge Elimination System permitting for construction of a parallel bored tunnel as part of the 17-mile Chesapeake Bay Bridge Tunnel Complex. Work included numerous ecological assessments, plan development, and physical and chemical testing.



Port of Guam Modernization

Working for the U.S. Department of Transportation Maritime Administration (MARAD), EA served as program manager for the \$450 million design and construction phases of a 5-year port modernization program. Our team provided program and construction management services, including a Program Implementation Plan to deliver the program below budget. Value engineering helped reduce costs by 25% (\$26 million) through reuse of existing infrastructure, redesign of utilities, use of local materials to match local contractor equipment/abilities, and project phasing to avoid costly markups.



Port of Corpus Christi

Green Marine is an environmental certification program for the North American marine industry. It is a voluntary, transparent, and inclusive initiative that addresses key environmental issues through 12 performance indicators. EA staff include accredited verifiers who provide attestation of self-claimed environmental reporting.

